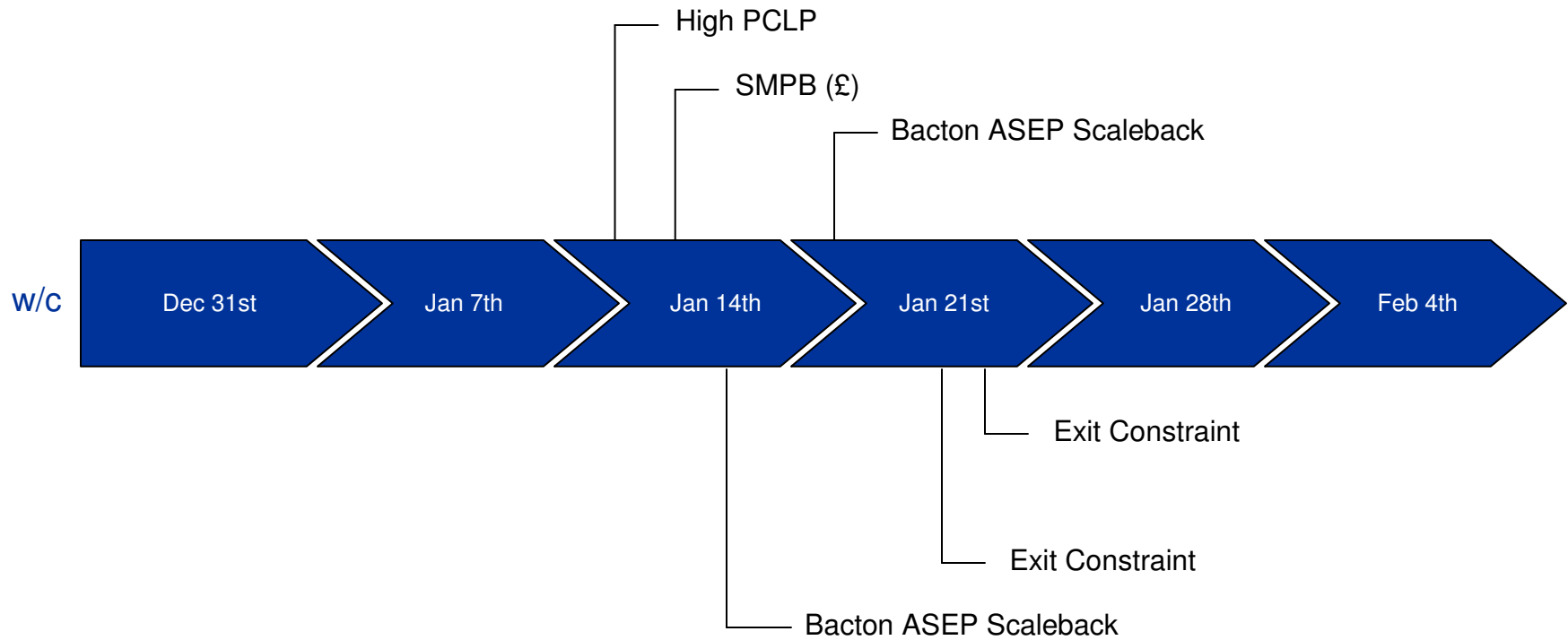


Operational Overview

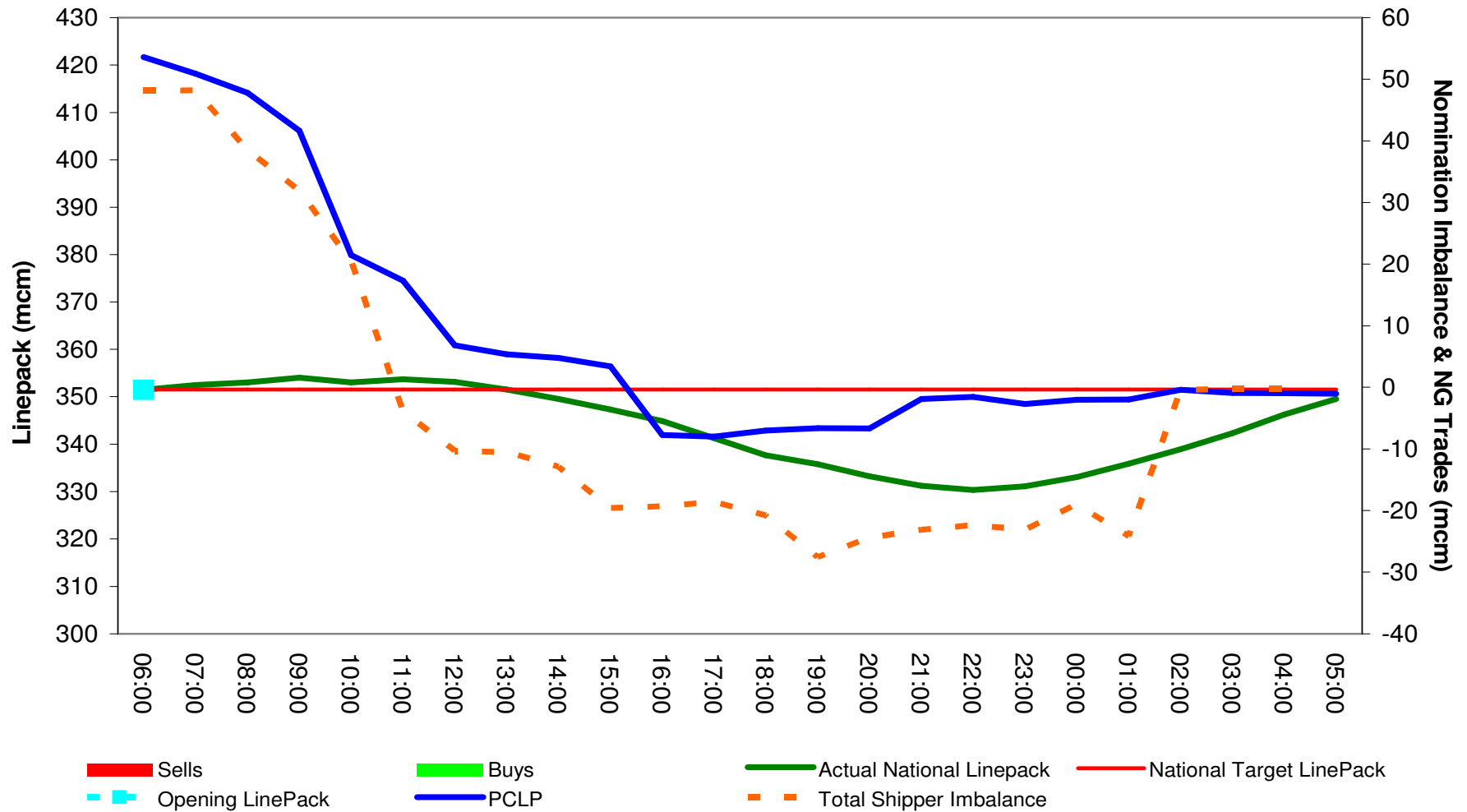


Interesting Day Overview: February 2013

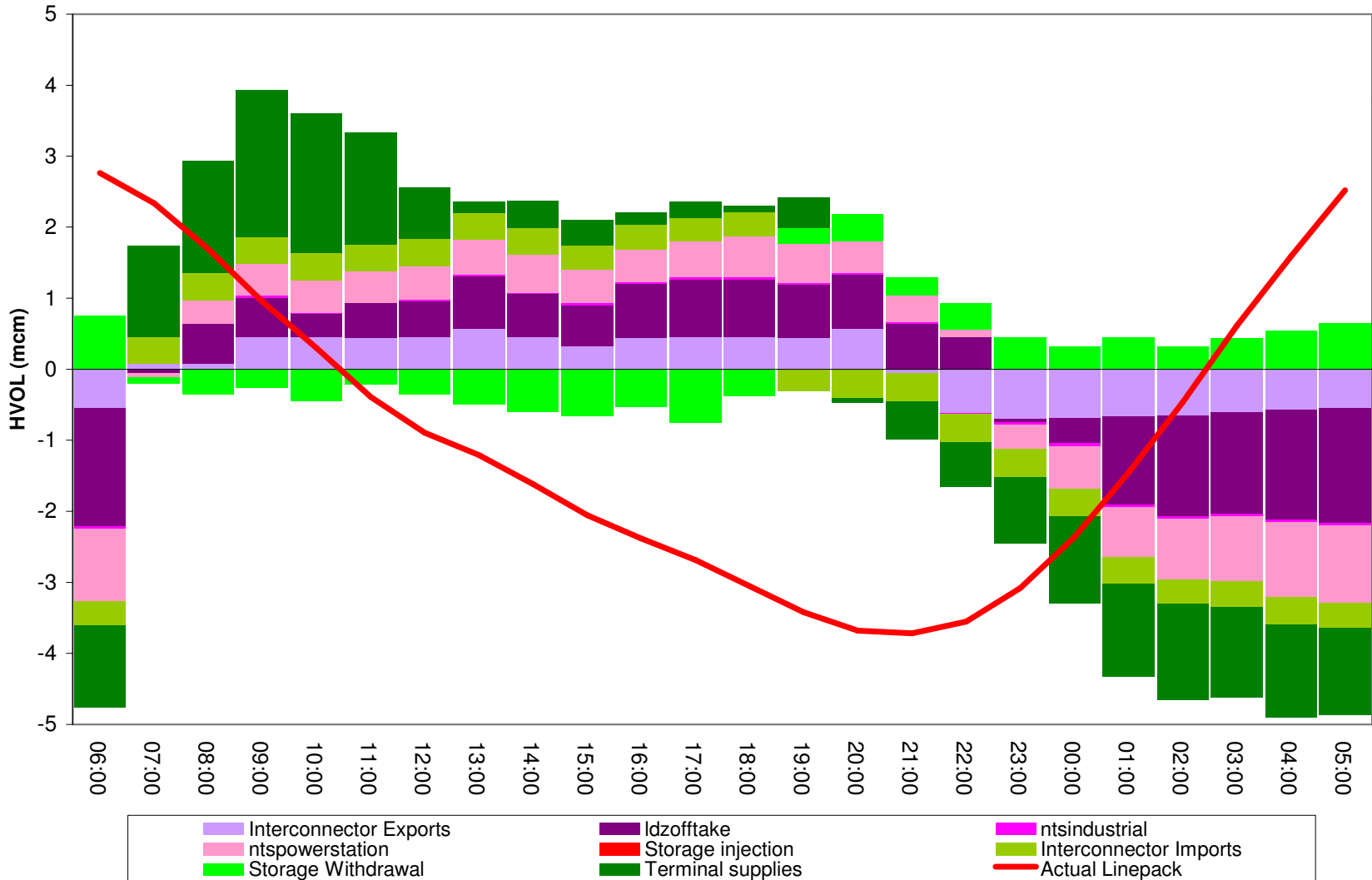
Interesting Day Overview



14th January: High PCLP

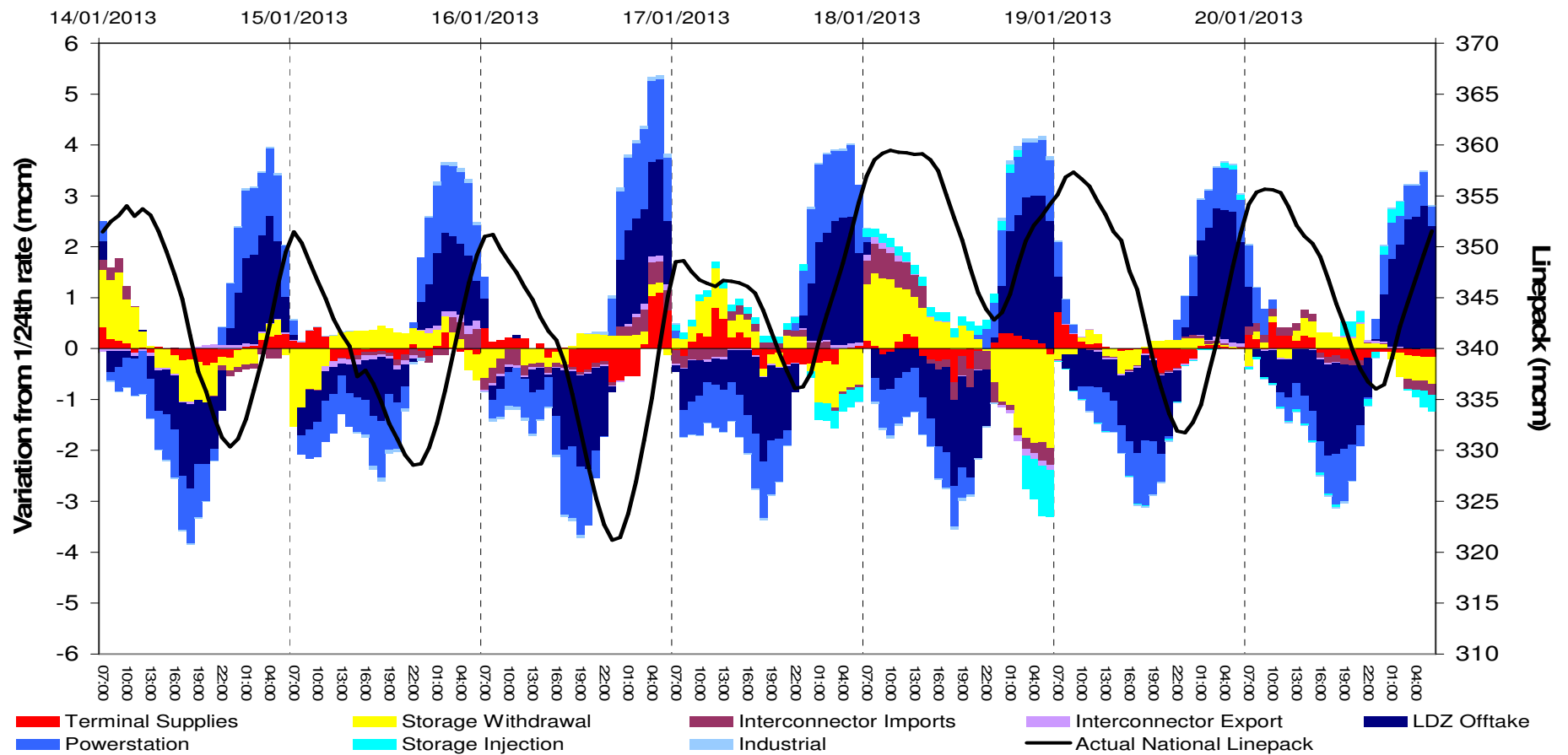


Supply & Demand Hourly Variation from 1/24 Rate



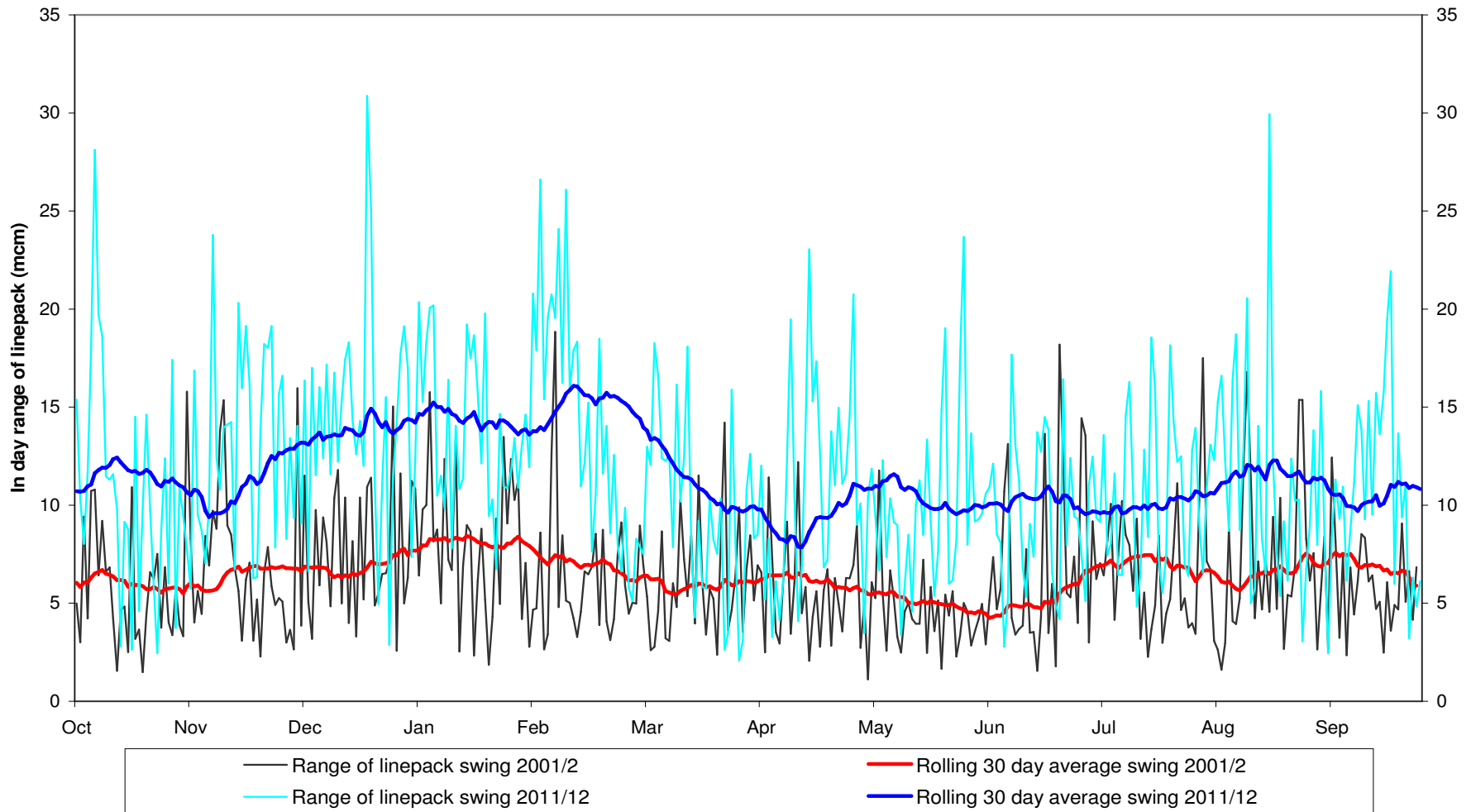
Week commencing 14th January: Linepack Swing

Supply & Demand Profile impact on Actual Linepack

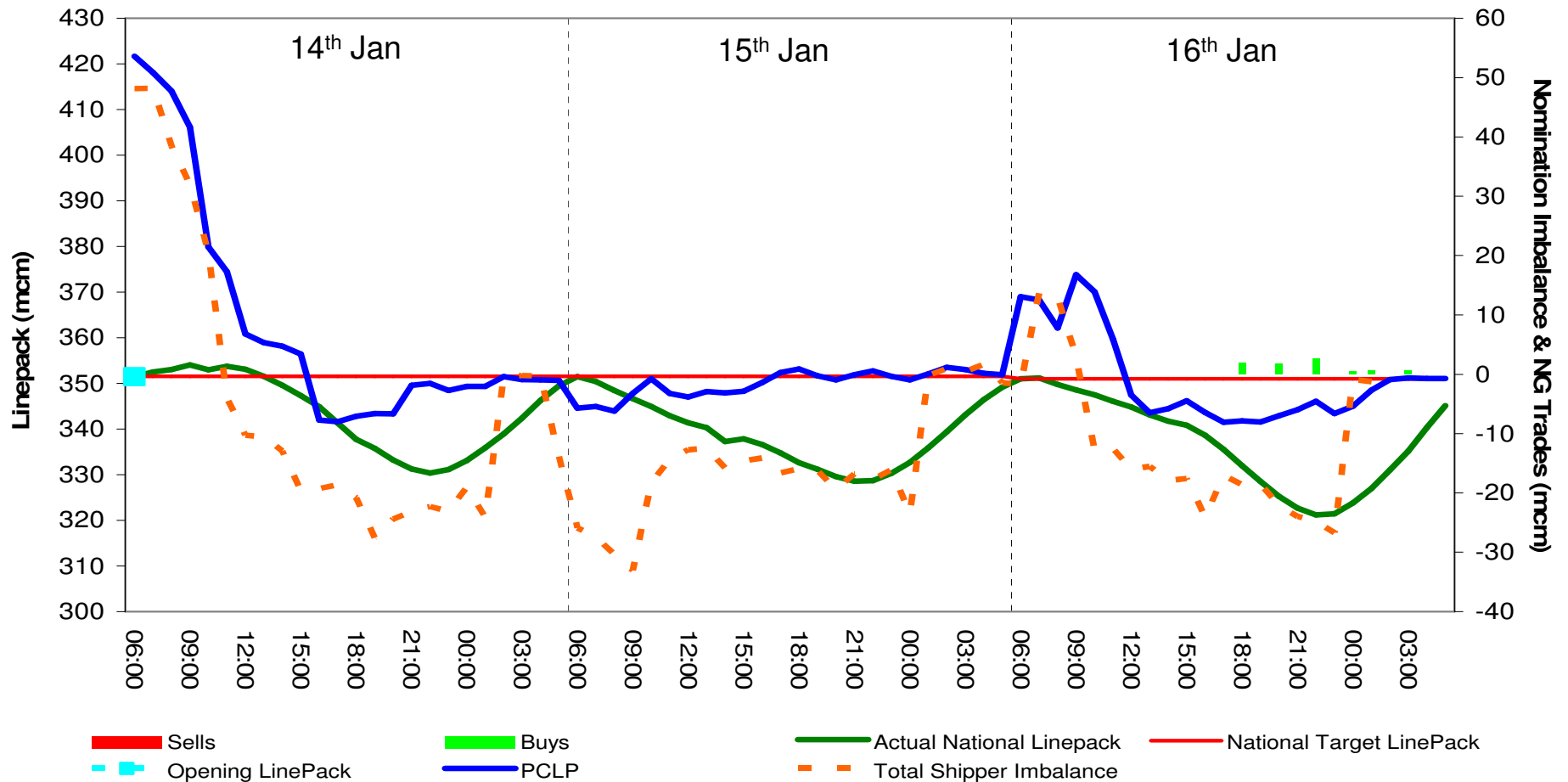


2001/2 vs 2011/12: Linepack Variation

Comparison of within day max-min range of NTS linepack (mcm)

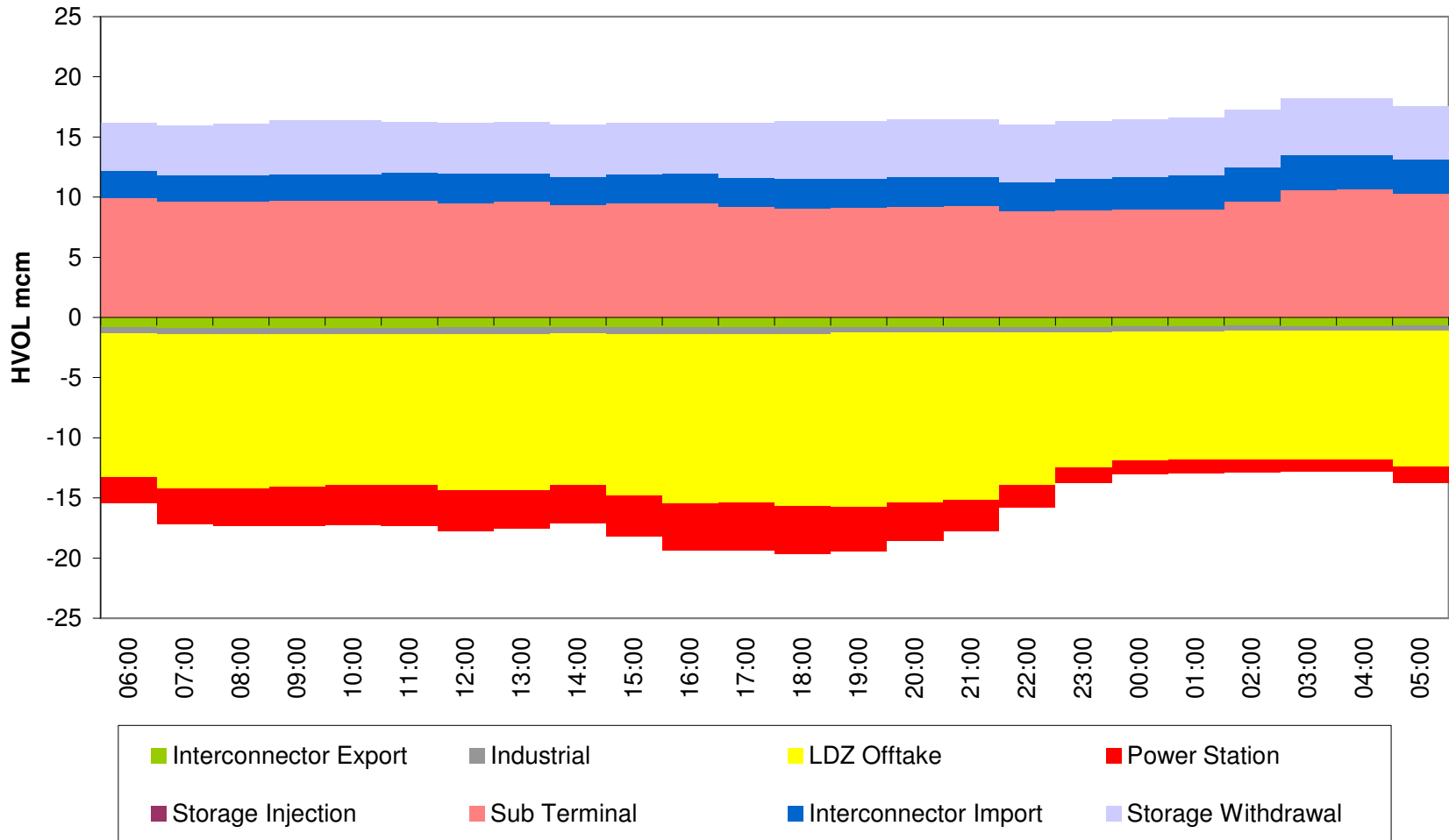


14th 15th 16th January

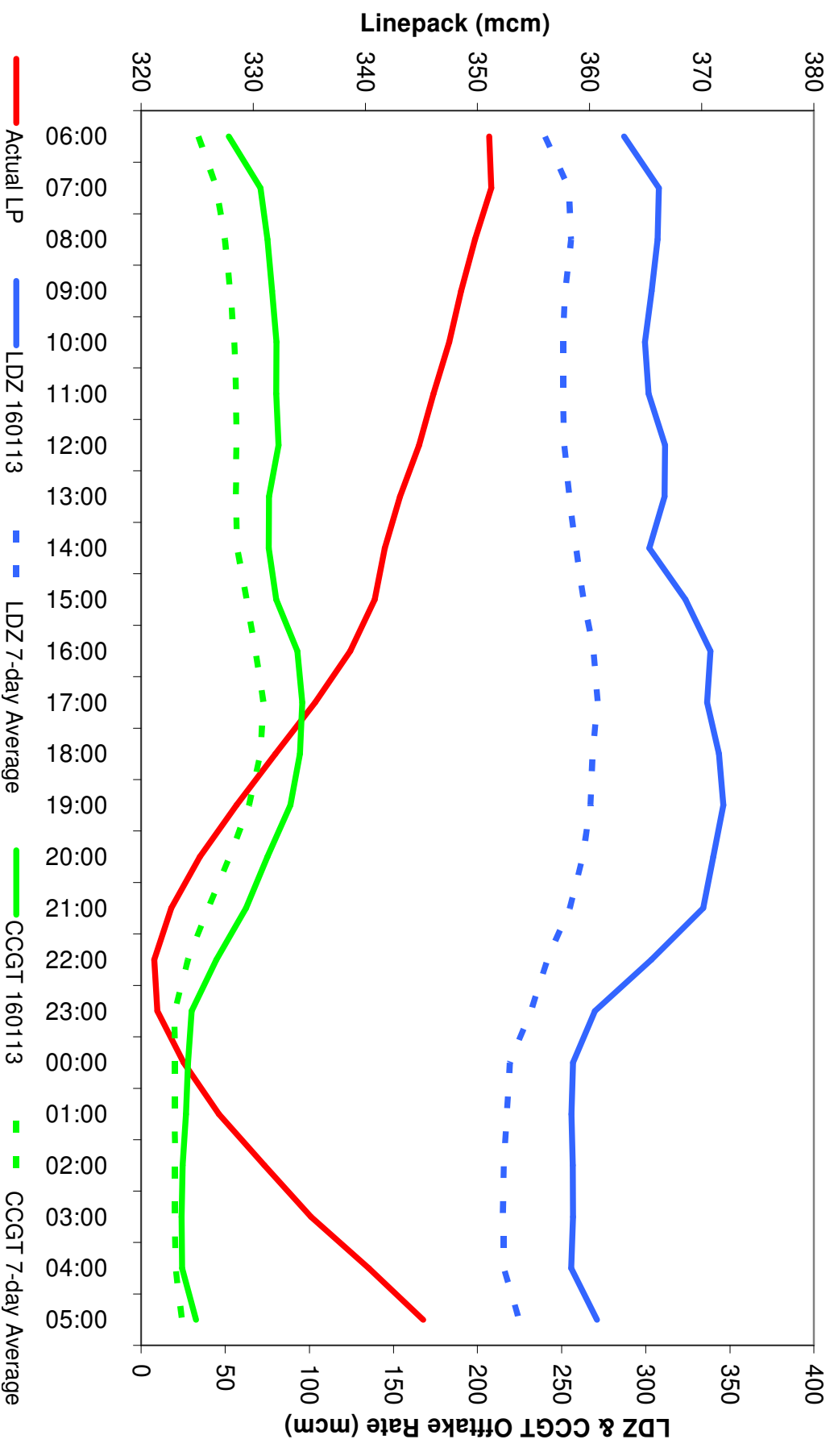


16th January: DN & Power Station Diurnal Take

HVOL Profiles - Supply and Demand

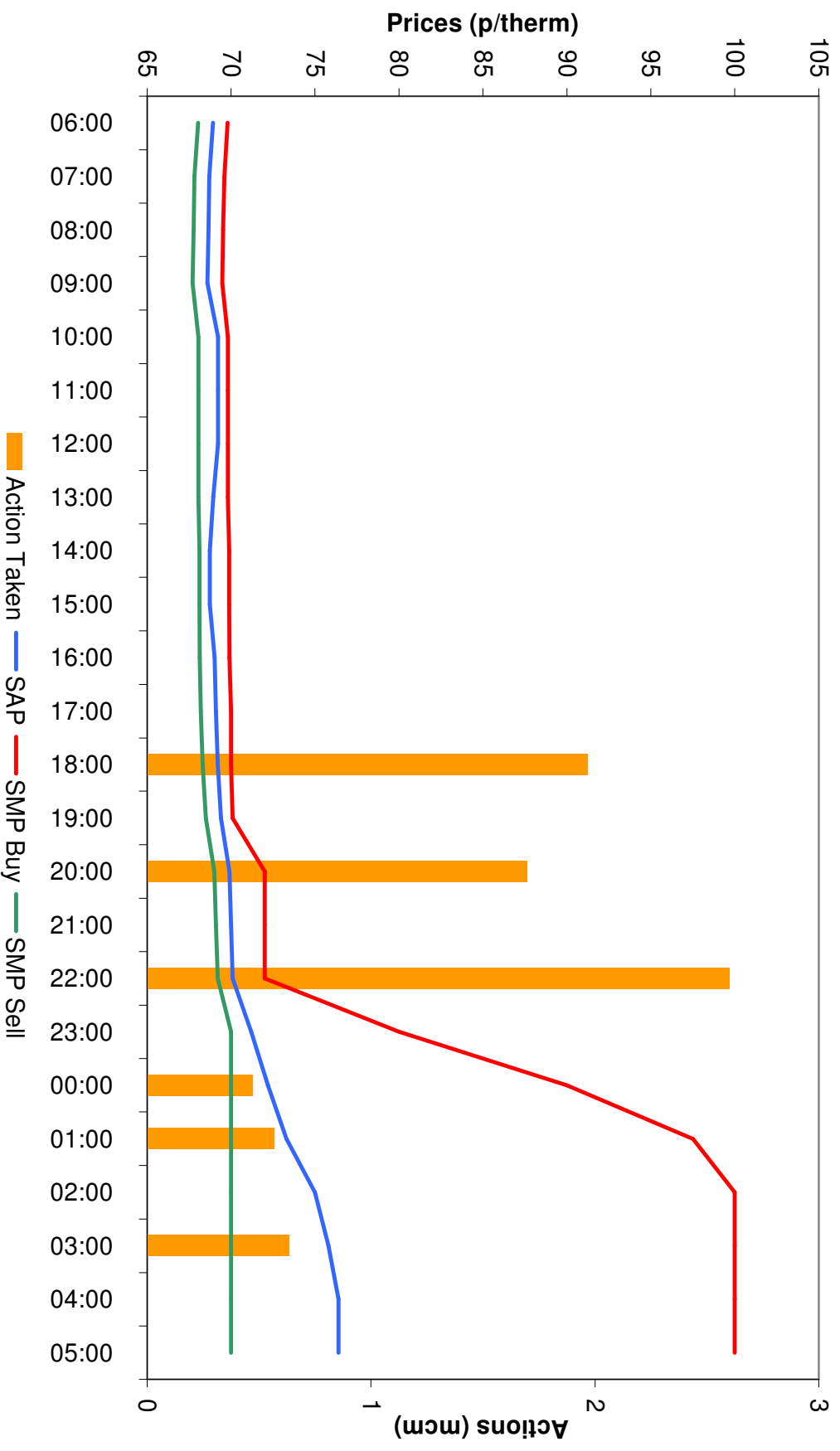


16th January: LDZ & CCGT Demand Previous 7 days

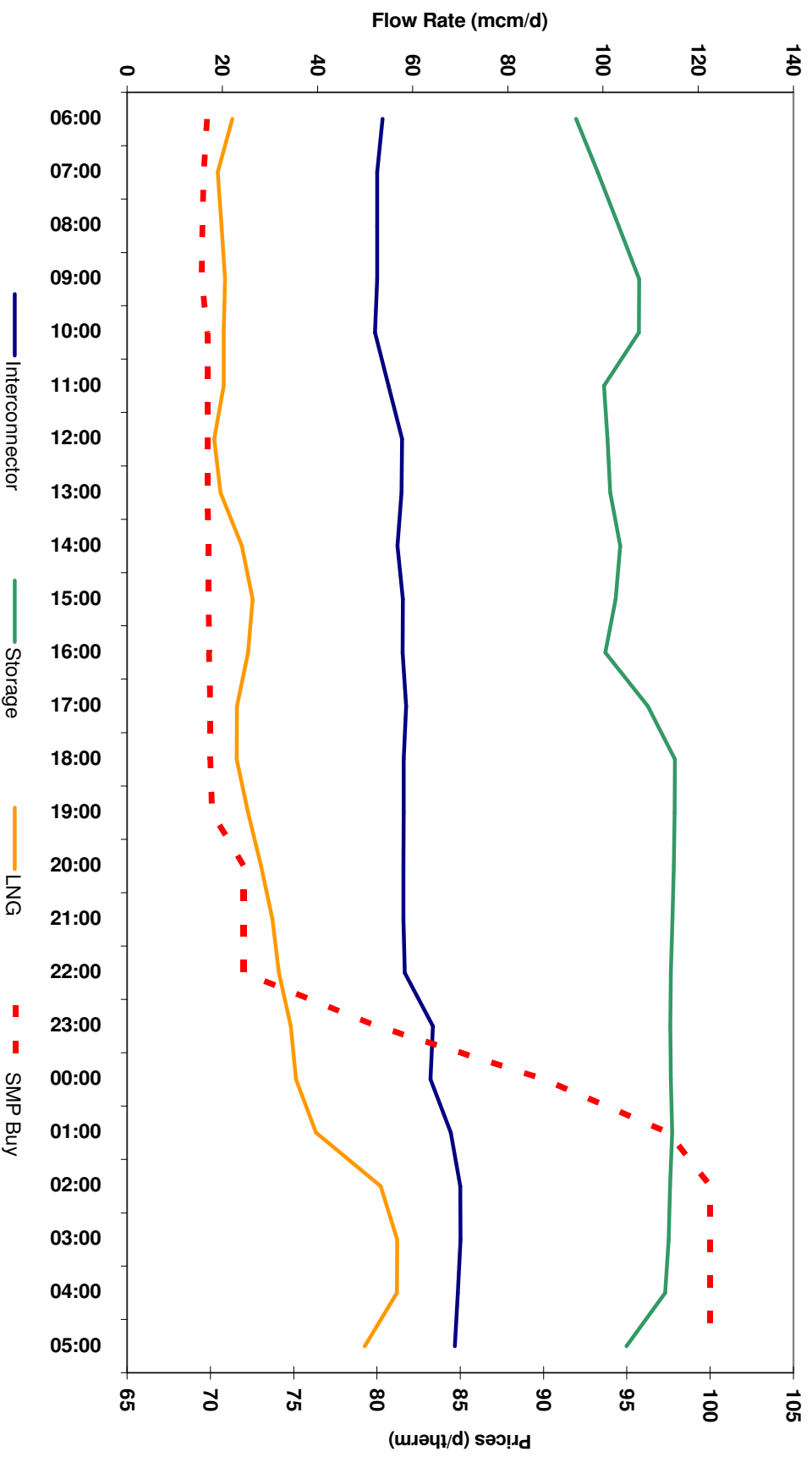


16th January: 100p/therm

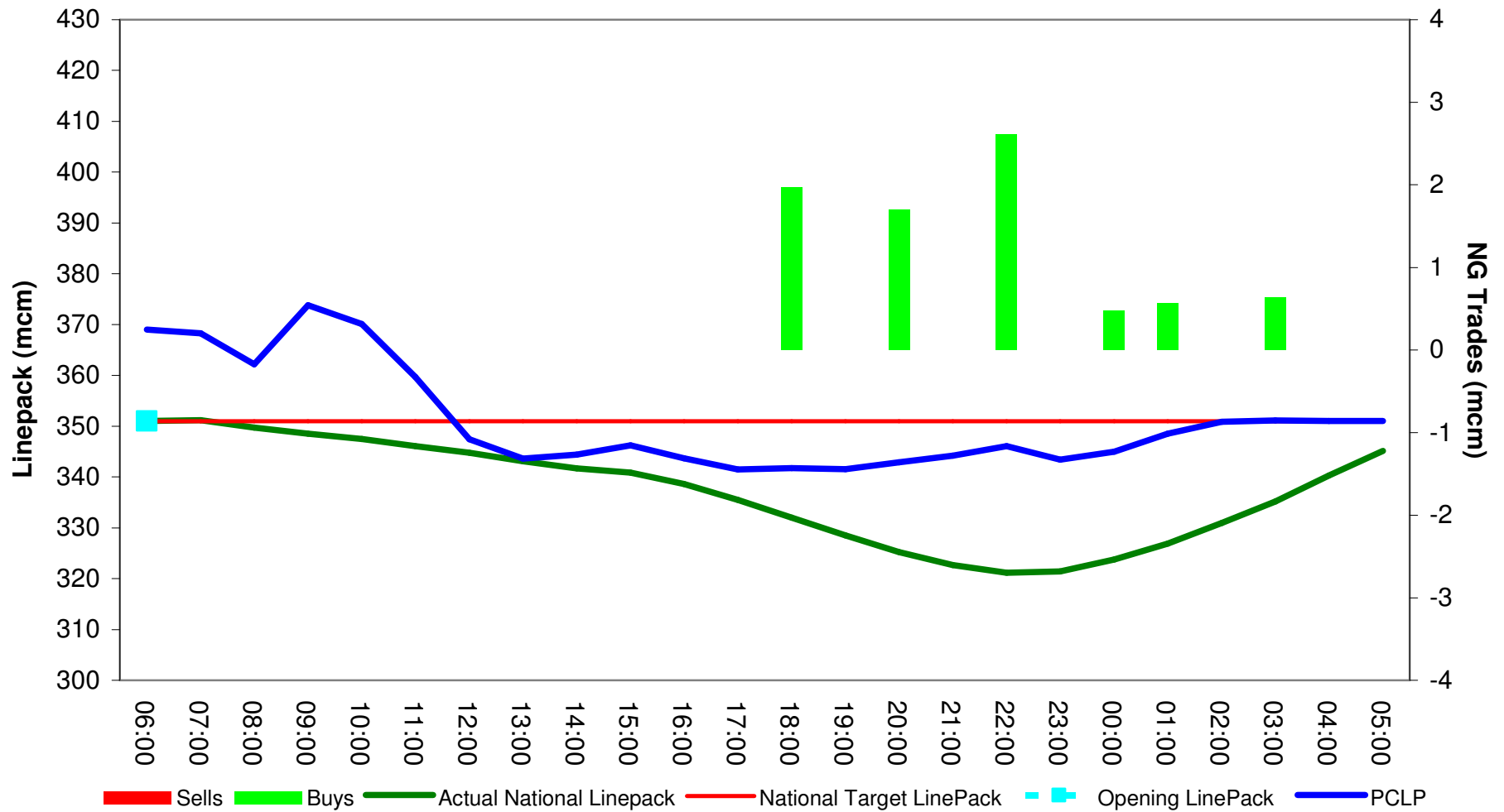
Prices and NG Actions



16th January: Market Response



16th January: End of day position

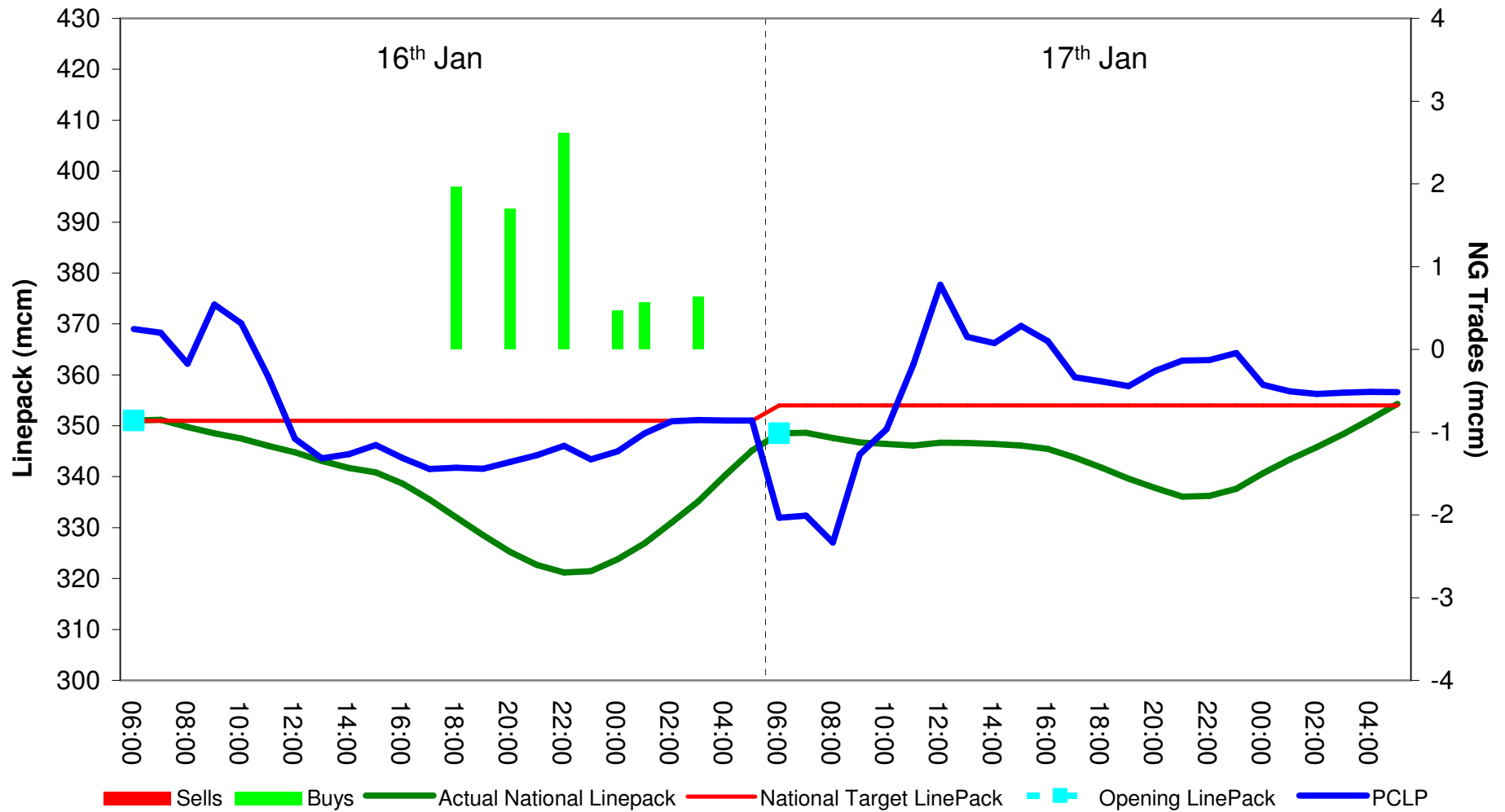


Bacton ASEP Scalebacks

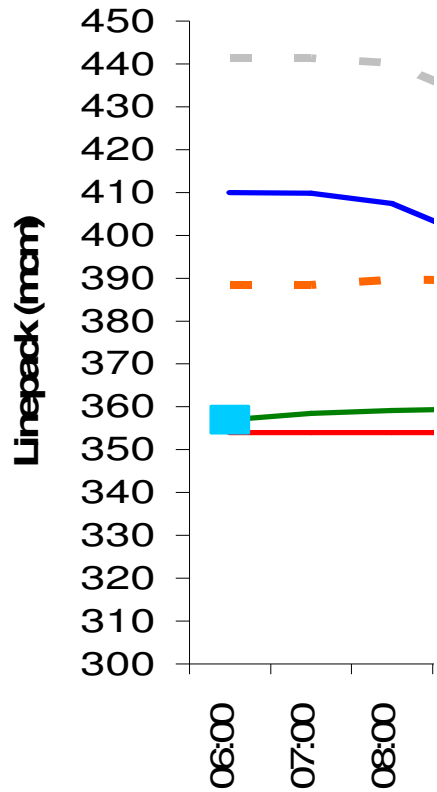


18th & 21st January 2013

16th 17th January



18th January: Start of Day Context

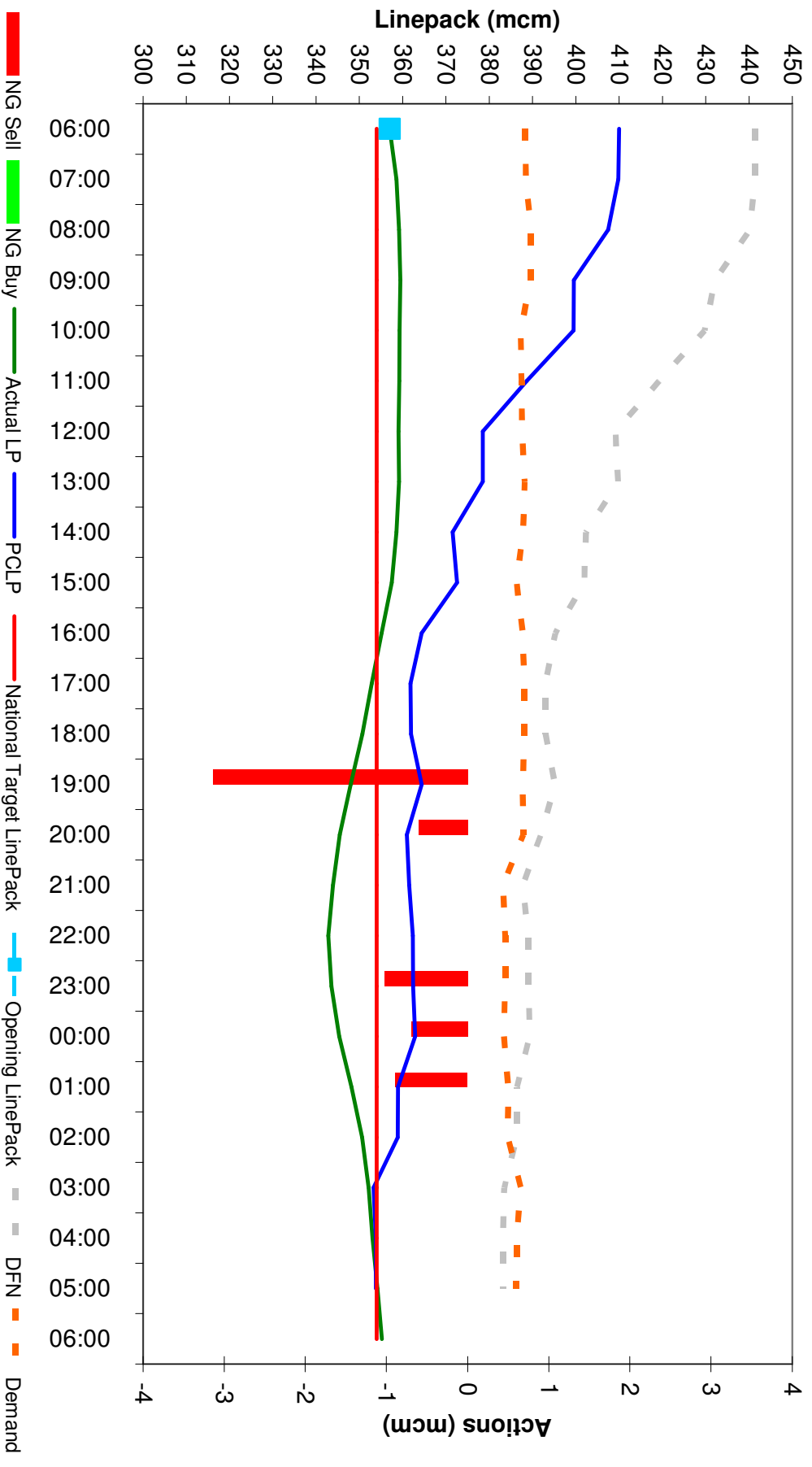


- Actual LP
- PCLP
- National Target LinePack
- Opening LinePack
- - DFN
- - Demand

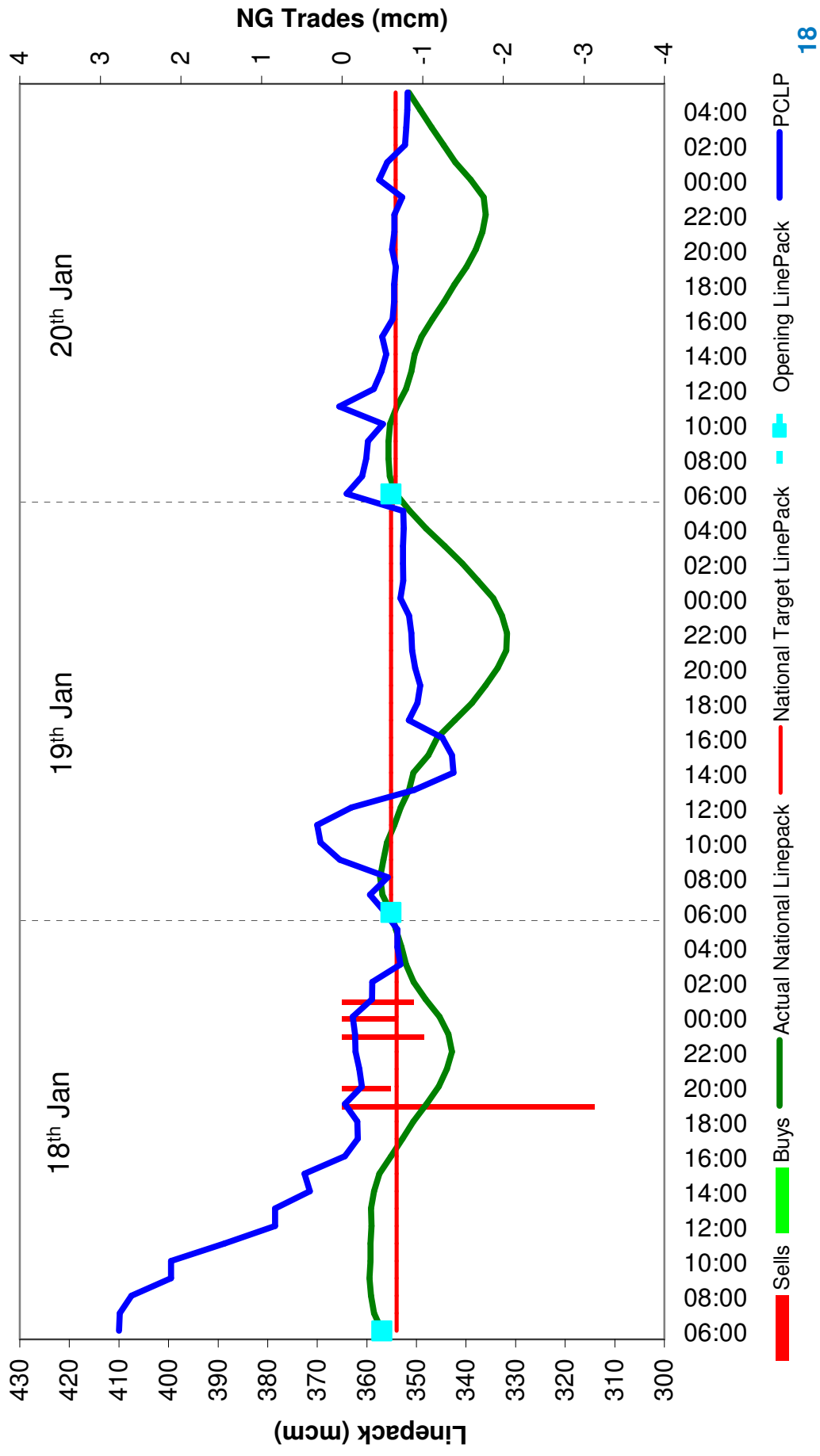
18th January: NG Actions

- Bacton ASEP Interruptible capacity scaled back.
- Release of additional firm entry capacity at Bacton withheld.

18th January: Outturn



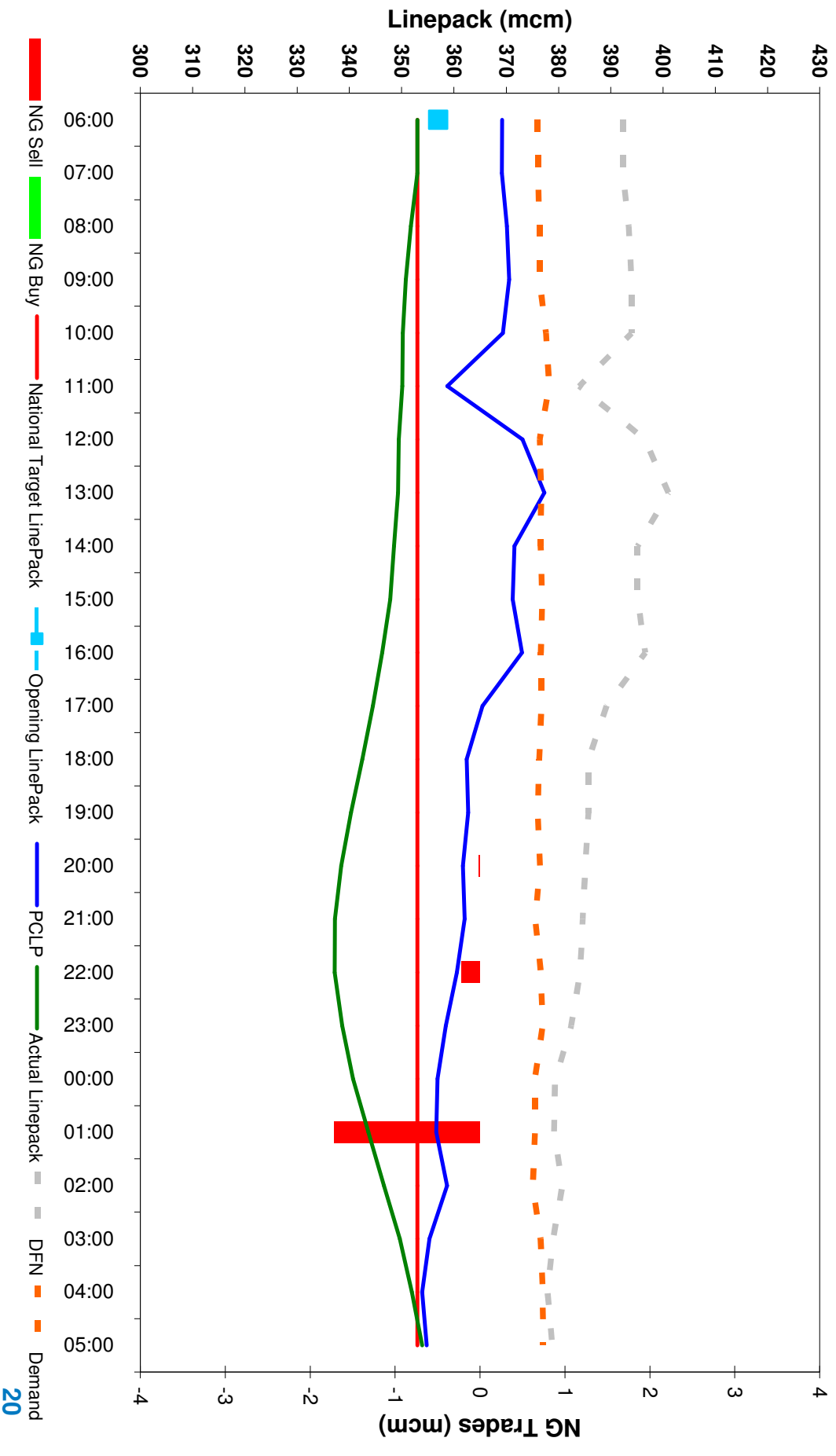
18th 19th 20th January



21st January: Events

- Norwegian Supply loss at Langeled (approx 25mcm EoD)
- The forecast increase in flows at IoG to cover this supply loss combined with an already heavy system and high Bacton flows cause a concern over a potential constraint at Bacton.
- Firm capacity release restricted at Bacton ASEP & Interruptible capacity scaled back
- 11:00 Interruptible capacity restored & firm capacity released

21st January: Outturn

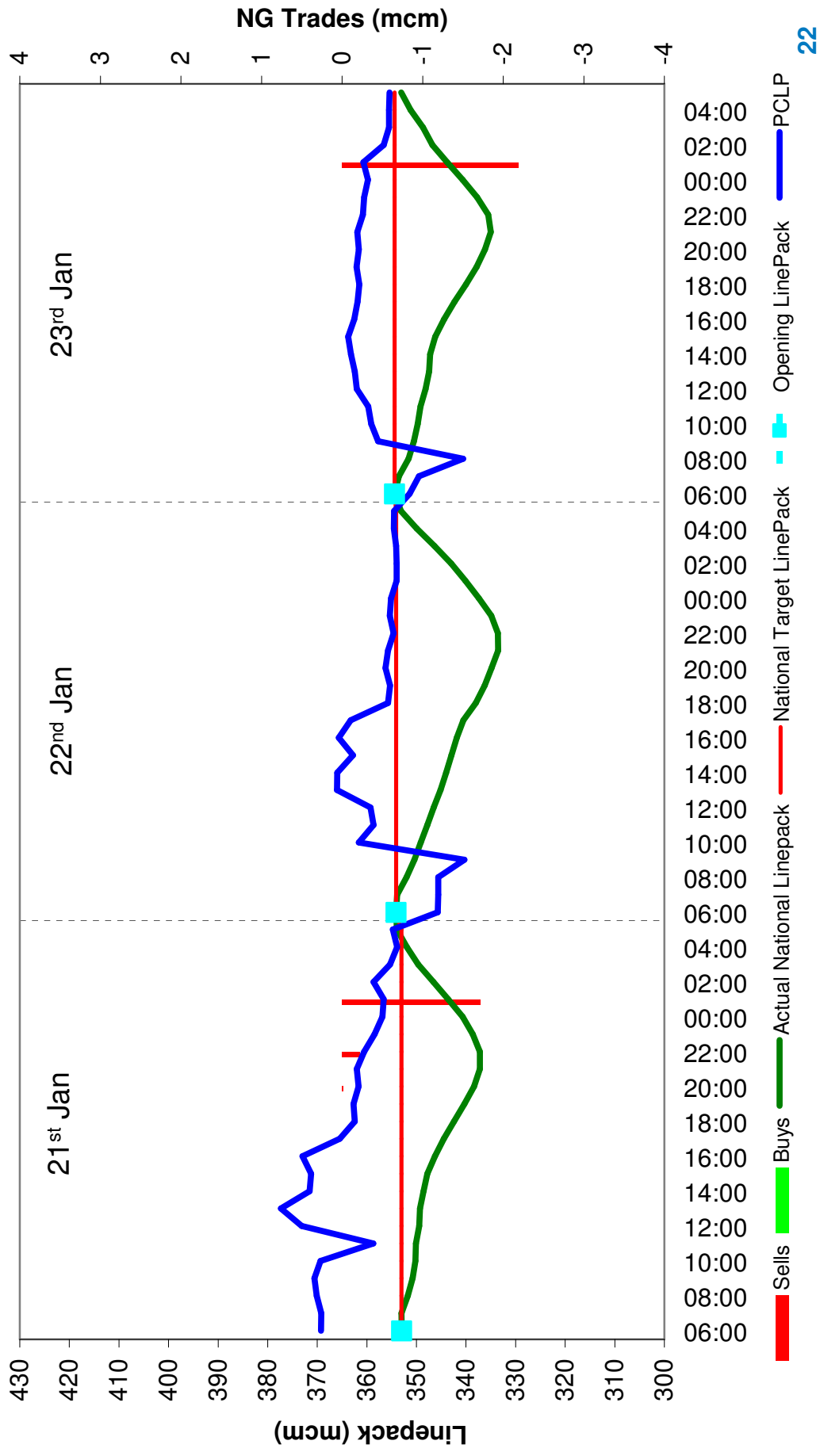


Exit Constraint



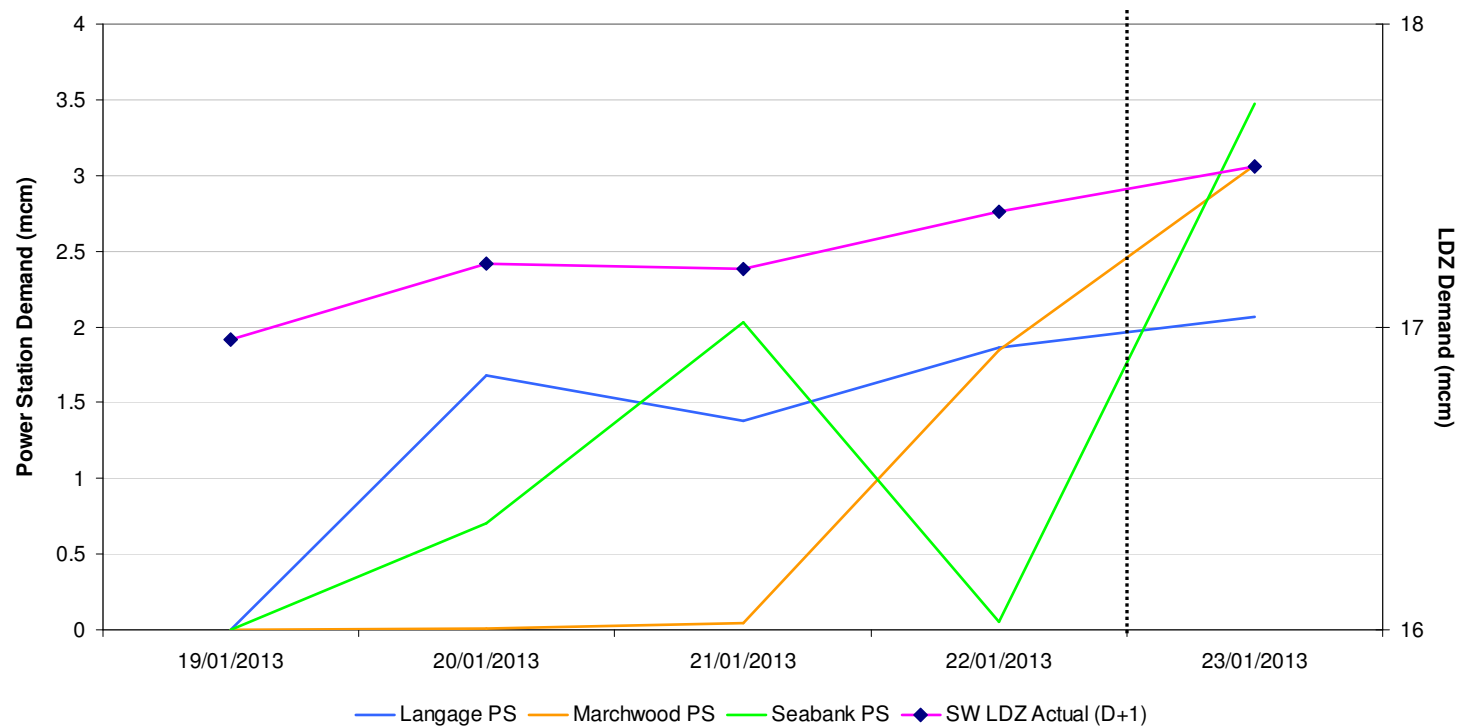
23rd & 25th January 2013

21st 22nd 23rd January



23rd January: SW LDZ and Power Station demand

- Higher demand in SW for LDZ and Power Stations on the 23rd January...



	19/01/2013	20/01/2013	21/01/2013	22/01/2013	23/01/2013
SW LDZ Actual (D+1)	16.96	17.21	17.19	17.38	17.53
Langage PS	1.68	1.38	1.86	2.07	2.48
Seabank PS	0	0.7	2.03	0.05	3.47
Marchwood PS	0.01	0.04	1.85	3.07	3.25

23rd January: NG Actions

- Reconfigure the NTS
- Flow swap agreed
- Short Term NTS Flexibility Restriction issued in SW and SE
- Off-Peak Exit Capacity scalebacks initiated
- Locational offers and Exit Capacity surrender offers requested

25th January: NG Actions

- Short Term NTS Flexibility Restriction issued in SW and SE
- No further actions required.

Lessons Learnt

- First time we have undertaken Exit Actions
 - No Capacity Surrender offers received
 - Some process learning with our control room

- Any feedback?
 - Email: Jenny.Phillips@nationalgrid.com
 - Phone: 01926 653977